



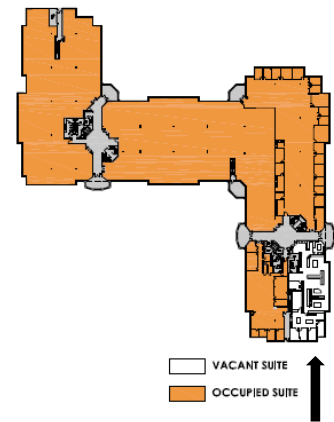
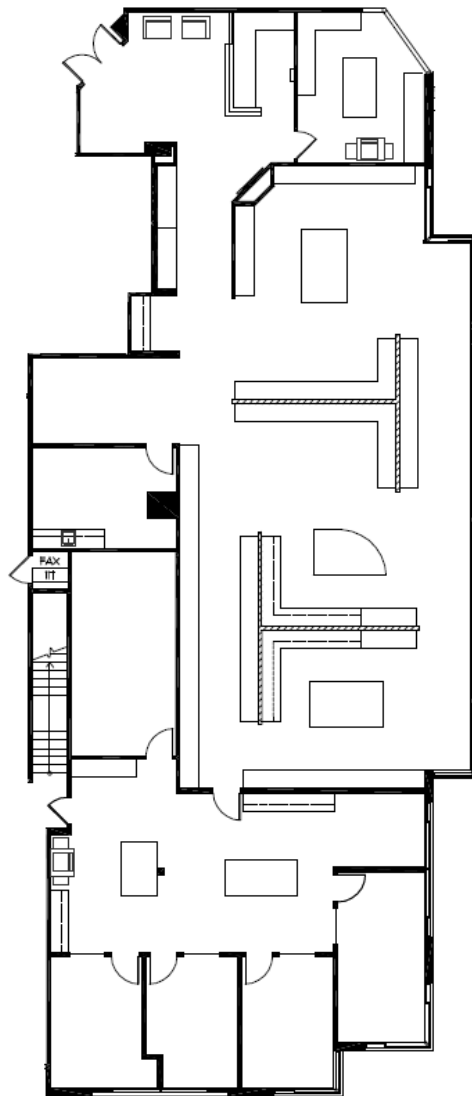
30699 | SUITE 180

RUSSELL RANCH ROAD

WESTLAKE VILLAGE, CA 91362

Suite 180: 5,552 RSF

Available: 07/2018



For more information, contact:

Jim Lindvall

License #01012372

+1 818 531 9678

Jim.Lindvall@am.jll.com

Dan Sanchez

License #01308273

+1 818 531 9682

Dan.Sanchez@am.jll.com



DISCLAIMER

Although information has been obtained from sources deemed reliable, neither Owner nor JLL makes any guarantees, warranties or representations, express or implied, as to the completeness or accuracy as to the information contained herein. Any projections, opinions, assumptions or estimates used are for example only. There may be differences between projected and actual results, and those differences may be material. The Property may be withdrawn without notice. Neither Owner nor JLL accepts any liability for any loss or damage suffered by any party resulting from reliance on this information. If the recipient of this information has signed a confidentiality agreement regarding this matter, this information is subject to the terms of that agreement. ©2017 Jones Lang LaSalle IP, Inc. All rights reserved.



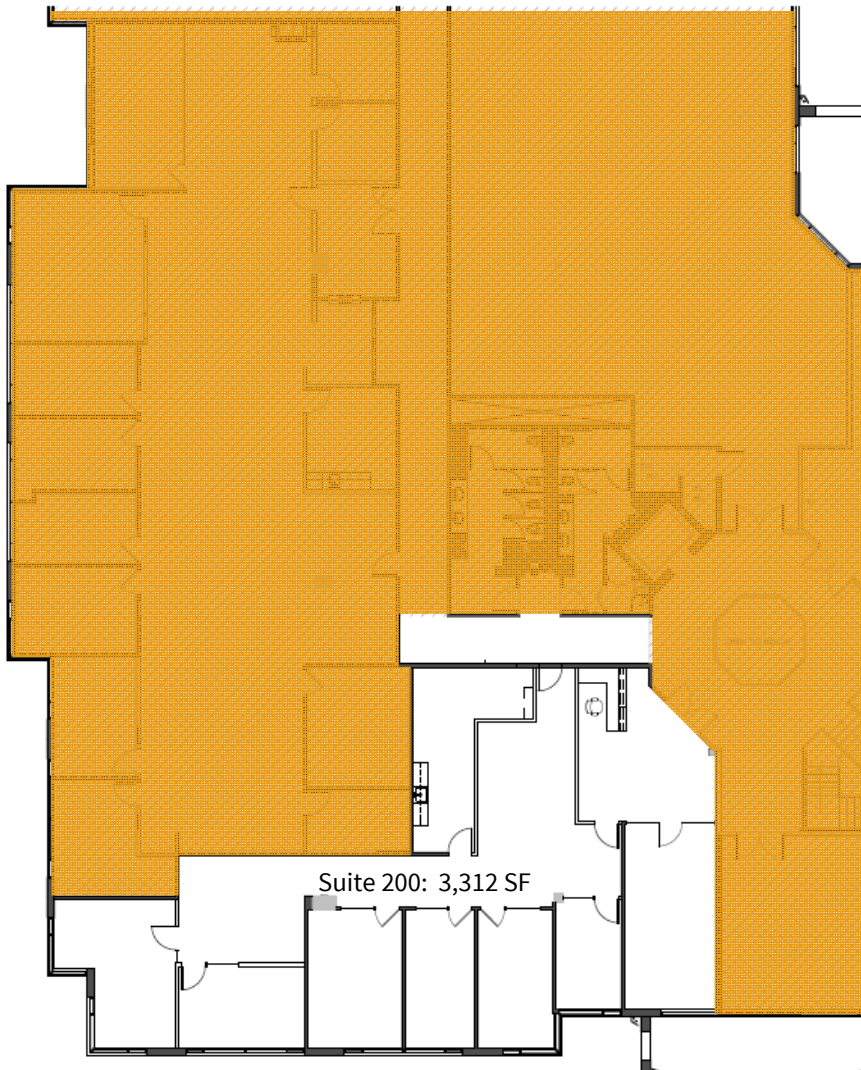
30699 | SUITE 200

RUSSELL RANCH ROAD

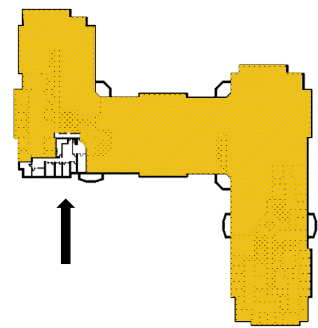
WESTLAKE VILLAGE, CA 91362

Suite 200: 3,312 RSF

Available: Immediately



Suite Location Map



For more information, contact:

Jim Lindvall

License #01012372

+1 818 531 9678

Jim.Lindvall@am.jll.com

Dan Sanchez

License #01308273

+1 818 531 9682

Dan.Sanchez@am.jll.com



DISCLAIMER

Although information has been obtained from sources deemed reliable, neither Owner nor JLL makes any guarantees, warranties or representations, express or implied, as to the completeness or accuracy as to the information contained herein. Any projections, opinions, assumptions or estimates used are for example only. There may be differences between projected and actual results, and those differences may be material. The Property may be withdrawn without notice. Neither Owner nor JLL accepts any liability for any loss or damage suffered by any party resulting from reliance on this information. If the recipient of this information has signed a confidentiality agreement regarding this matter, this information is subject to the terms of that agreement. ©2017 Jones Lang LaSalle IP, Inc. All rights reserved.